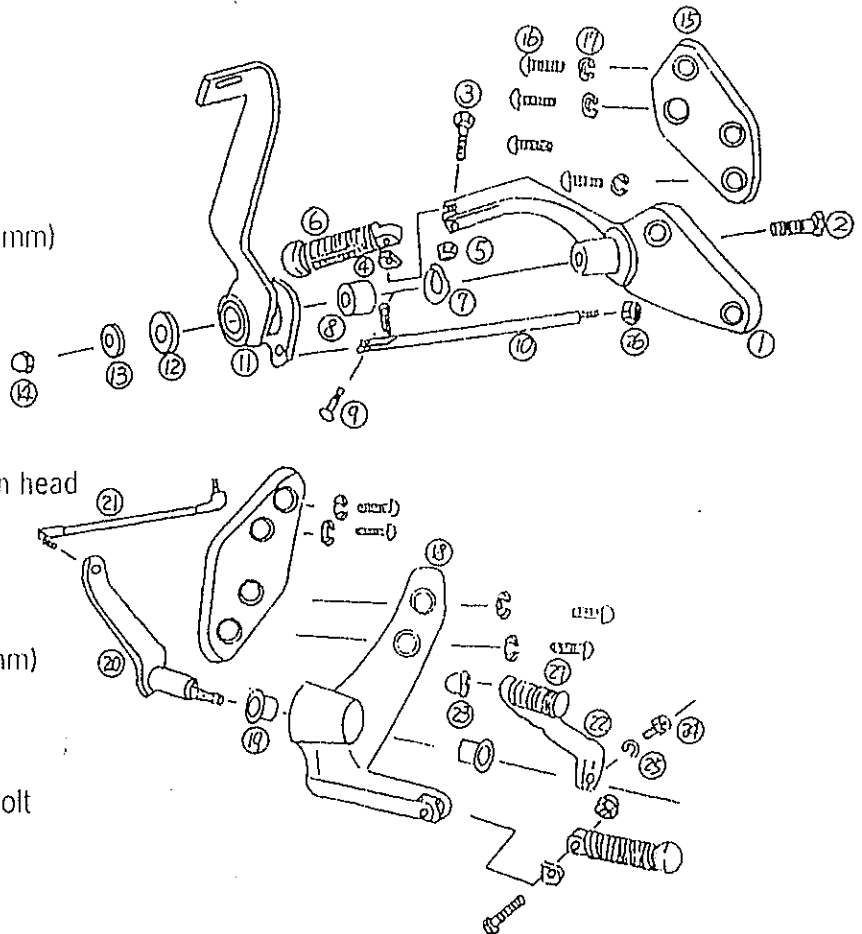




FORWARD CONTROL KIT FOR DYNA GLIDE (056095)
EXTENDED FORWARD CONTROL KIT FOR DYNA GLIDE (056096)
EXTENSION KIT FOR DYNA WIDE GLIDE FORWARD CONTROL (056099)

No.	Quantity			Description
	056095	056096	056099	
1	1	1		Brake backing plate
2	1	1		3/8-24 X 3/4" UNF Bolt
3	2	2		3/8-16 X 1 1/2" UNC bolt
4	2	2		Spring plate
5	2	2		3/8"-16 UNC Nylon nut
6	2	2		Foot peg
7	1	1		Wave washer
8	1	1		Bushing
9	1	1	1	Clevis & pin
10	1	1	1	Extended brake rod (595 mm)
	1			Brake rod (533 mm)
11	1	1		Brake pedal
12	1	1		Spacer
13	1	1		3/8" Flat washer
14	1	1		3/8" UNF Acorn nut
15		2	2	Extension plate
16	4	8	8	3/8"-16 X 3/4" UNC Button head
17	4	8	8	3/8" Lock washer
18	1	1		Shifter backing plate
19	2	2		Bushing
20	1	1		Shift lever shaft
21		1	1	Extended shift rod (396 mm)
	1			Shift rod (336 mm)
22	1	1		Shift lever
23	1	1		5/16" nylon nut
24	1	1		5/16" X 1" Socket head bolt
25	1	1		5/16" Lock washer
26	1	1		5/16" UNF nut
27	1	1		Shift peg



Note: Use blue Locktite on the first three threads of all hardware.



**FORWARD CONTROL KIT FOR DYNA GLIDE (056095)
EXTENDED FORWARD CONTROL KIT FOR DYNA GLIDE (056096)
EXTENSION KIT FOR DYNA WIDE GLIDE FORWARD CONTROL (056099)**

1) For Dyna Wide Glide (FXDWG): Remove OEM brake control, brake rod, shift control and shift rod as described in workshop manual (extension plate set).

For Dyna Low Rider (FXDLR): Remove plastic plugs from holes in front down frame tubes. Remove stock brake and shift controls. Secure the stock "through the case" shift shaft with a tie-wrap (removal of the shift shaft requires disassembly of the outer and inner primary case).

2) Install mounting plates (15) to the frame using button head screws and lock washers (16 & 17) provided in kit. Tighten to 30 ft/lbs. (for extended kit or extension plate set)

3) Install brake pedal backing plate (1) and shift lever backing plate (18) to mounting plates (15) using button head screws and lock washers (16 & 17). Tighten to 30 ft/lbs.

4) Lubricate shift shaft bushings. Push shift lever shaft (20) through shift lever backing plate (18), install (extended) shifter rod to lever on transmission and shift lever shaft. Tighten to factory specifications 12 ft/lbs). Install shift peg (27) to shift lever (22). Install foot peg (6) to shift lever backing plate (18). Install "Anti Rattle" spring plate between foot peg and peg mount on the backing plate. Install shift lever (22) on shift shaft (20). Adjust as required. Install the lock washer (25) and 5/16 UNC socket head bolt (24) and tighten to 19 ft/lbs.

5. Push 3/8 UNF bolt (2) through hole in the brake pedal backing plate (1). Put some grease inside the brake pedal bushing and slide wave washer (7) and brake pedal (11) over the swivel point on the backing plate. Install spacer (12) and flat washer (13) on mounting bolt (2) and install 3/8 UNF acorn nut (14). Tighten nut to 30 ft/lbs. Screw lock nut (26) on the brake rod (10). Screw (extended) brake rod (10) into master cylinder to the point where the clevis pin (9) can be installed through brake pedal (11) and brake rod (10). Tighten the brake rod lock nut. Mount foot peg (6) and "Anti Rattle" spring plate (4) to the brake backing plate (1).

NOTE 1: Brake rod MUST have free play. If no free play, rear brake/pads may overheat/burn. Adjust according to the workshop manual

NOTE 2: Extended brake/shaft rod are only used with extended kit or extension plate set